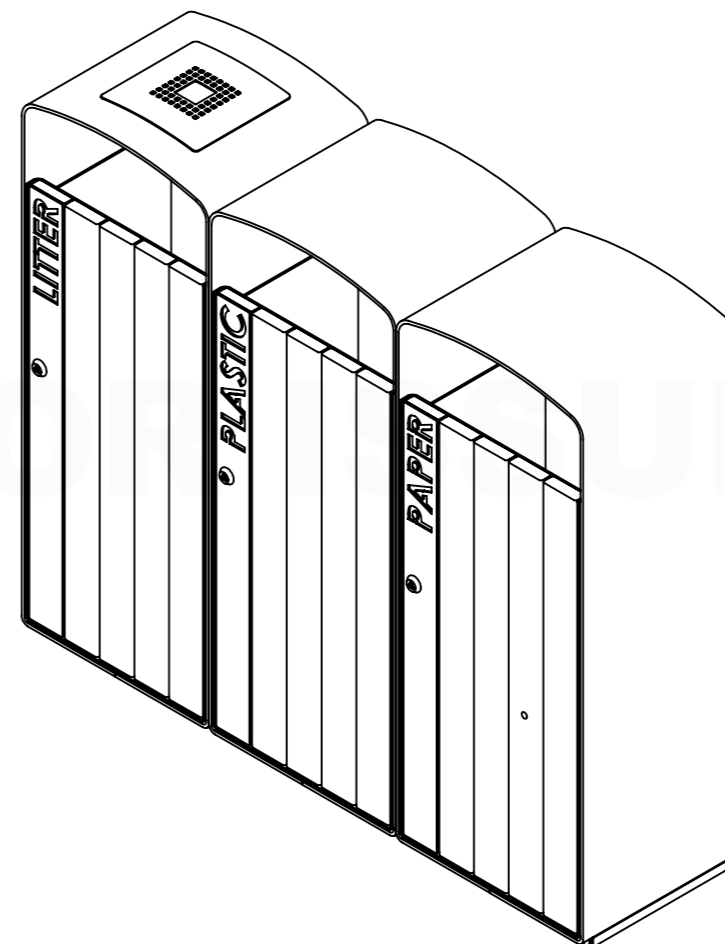




APPROVED FOR ISSUE



TRIPLE WASTE MANAGEMENT 13170

PRODUCT OVERVIEW

FINISH: POWDER COATED - RAL 7012

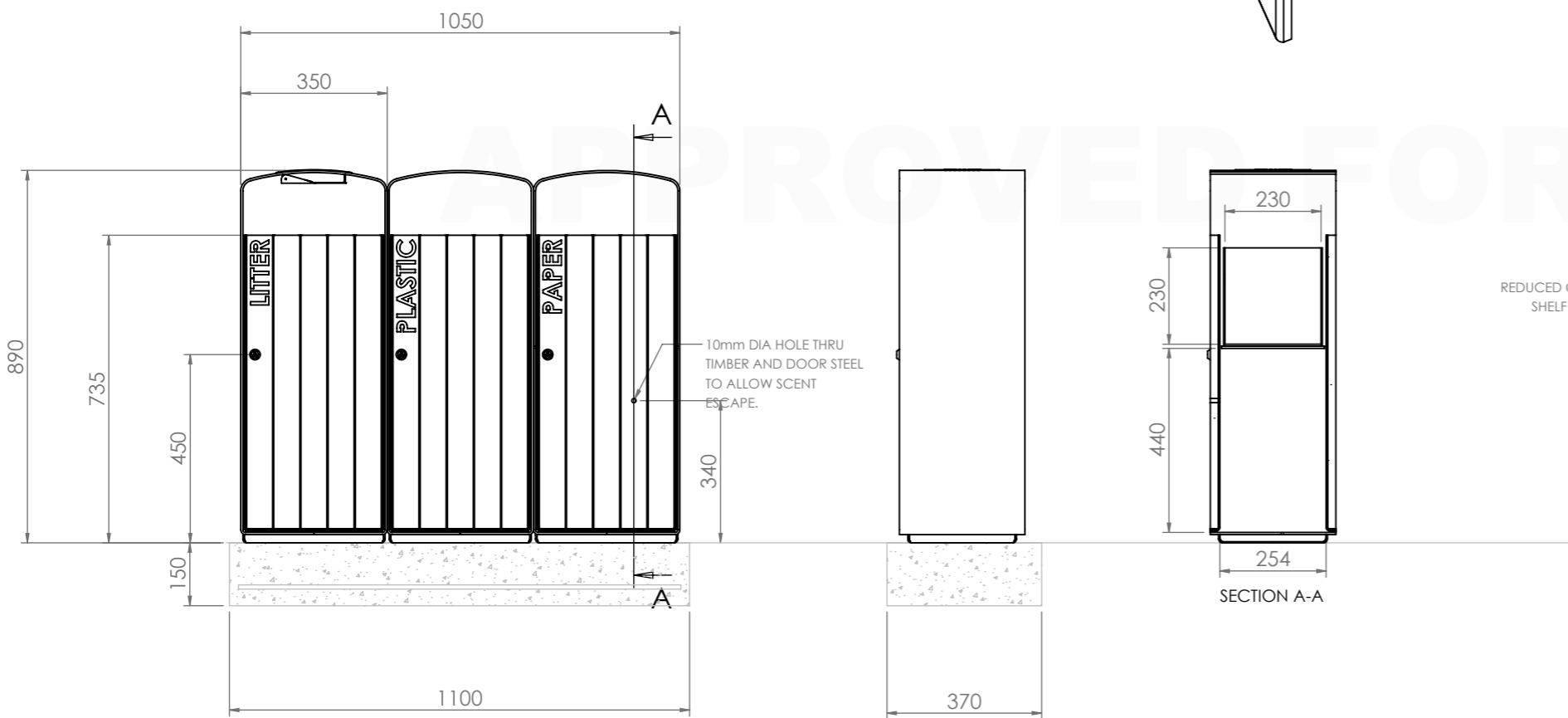
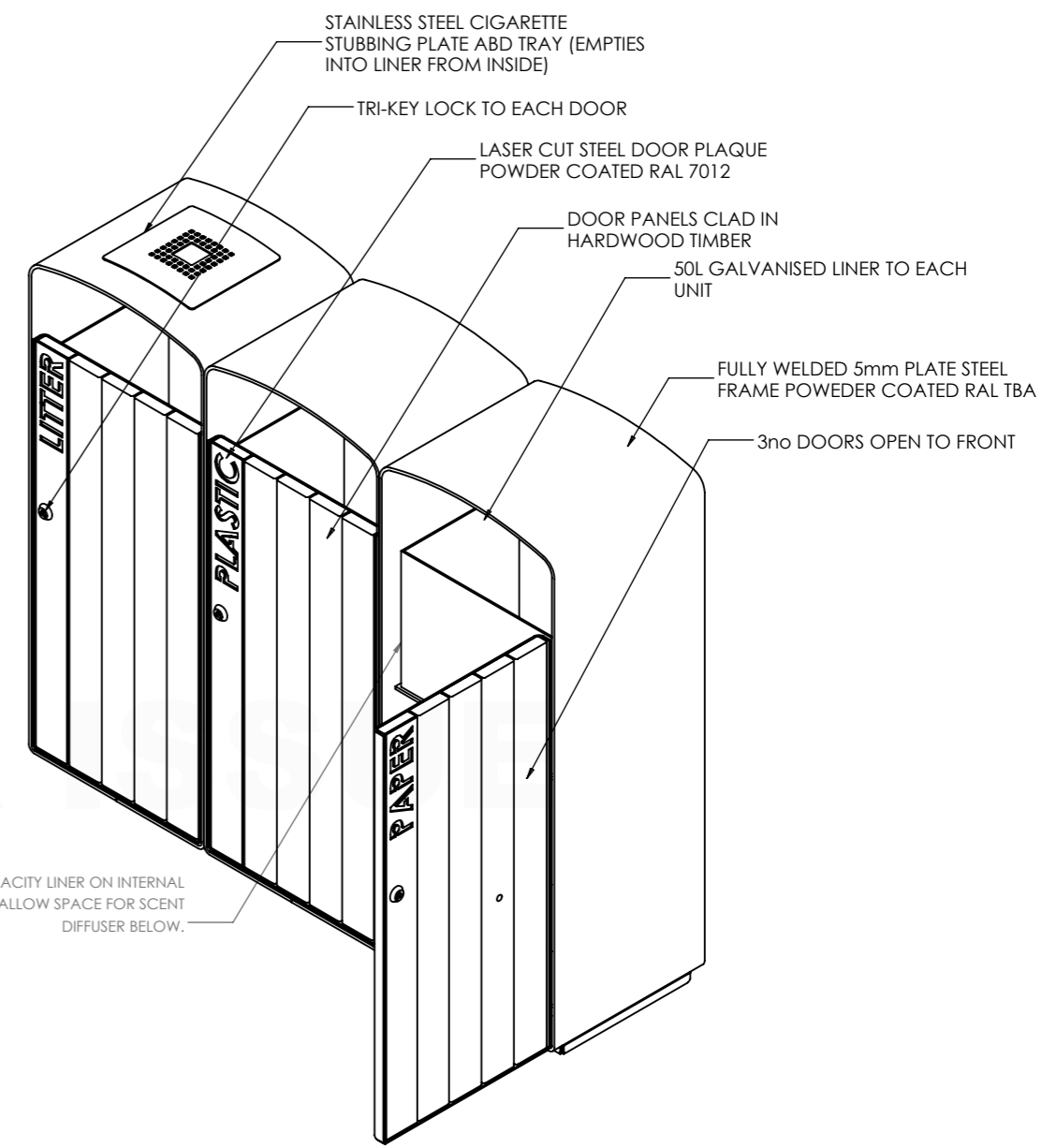
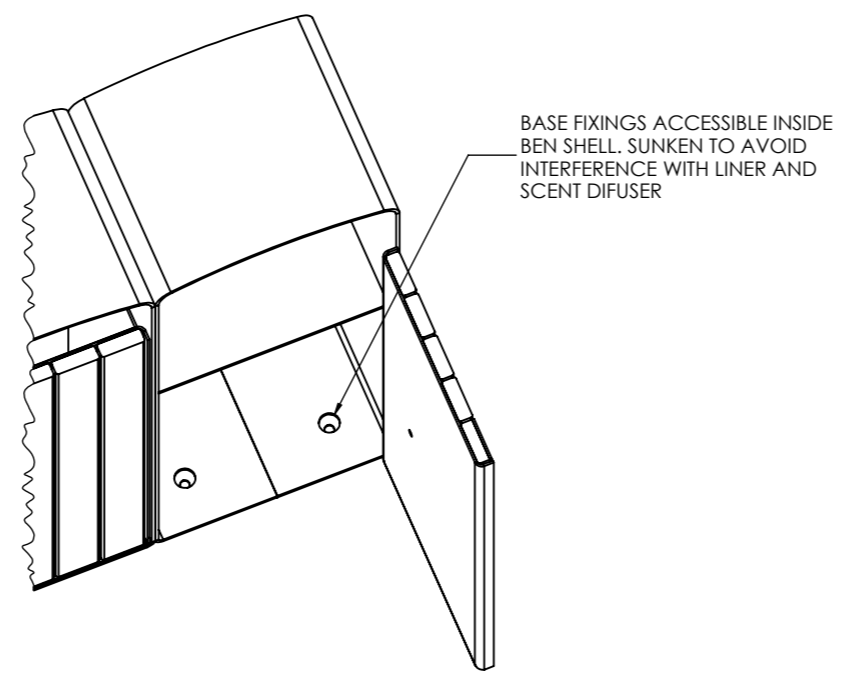
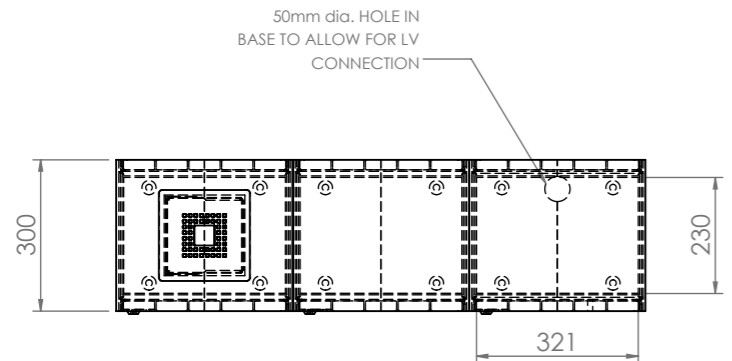


ADLINGTON BUSINESS PARK
LONDON ROAD
ADLINGTON
CHESHIRE t: 01625 855 900
SK104NL f: 01625 874 153

w: baileystreetscene.co.uk
e: sales@baileystreetscene.co.uk

DRAWING NUMBER: BSSGA2169-1_C	Doc. TYPE GA	SHEET: SHEET 1 OF 2	SCALE: 1:10 @A3	DRW: OS	DATE: 26/09/2019
DRAWING TITLE: PRODUCT OVERVIEW - TRIPLE WASTE MANAGEMENT 13170				CHK: TS	DATE: 26/09/2019
PART NUMBER: TRIPLE WASTE MANAGEMENT 13170				APP: JF	DATE: 28/02/2020
PART CONFIGURATION: STD				DRAWING STATUS: APPROVED FOR ISSUE	
BSS JOB NUMBER: 13170	3rd ANGLE PROJECTION		DO NOT SCALE FROM DRAWING DIMENSIONS IN mm UNLESS STATED OTHERWISE		Doc.REV: C

REVISIONS					
REV.	BY	DESCRIPTION	DATE	CHKD	APVD
A	OS	CONFIRMATION OF RAL, *DOORS OPEN TO FRONT* CONFIRMED, ADDITION OF CIGARETTE TRAY	28/11/2019	JF	JF
B	OS	CONFIRMATION OF GROUND FIXING ACCESS	16/01/2020	JF	JF
C	TS	AMENDED LINER IN PAPER BIN TO ALLOW INCLUSION OF SCENT DIFFUSER	28/02/2020	JF	JF



FOOTING OPTION:
 RECOMMENDED Min. FOUNDATION AS SHOWN IN C16/20 CONCRETE. **SITE ENGINEER TO DETERMINE APPROPRIATE SIZE AND COMPOSITION OF PAD BASED ON LOCAL GROUND CONDITIONS.**

INSTALLATION Via **6off Min. M10x100**

APPROXIMATE TOTAL WEIGHT: **379.9 Kg**

SUPPLIED TO SITE AS 3 BIN UNITS FOR ASSEMBLY DURING INSTALLATION

GENERAL ARRANGEMENT

ADLINGTON BUSINESS PARK
 LONDON ROAD
 ADLINGTON
 CHESHIRE t: 01625 855 900
 SK104NL f: 01625 874 153

w: baileystreetscene.co.uk
 e: sales@baileystreetscene.co.uk

DRAWING NUMBER: BSSGA2169-2_C	Doc. TYPE GA	SHEET: SHEET 2 OF 2	SCALE: 1:15 @A3	DRW: OS	DATE: 26/09/2019
DRAWING TITLE: GENERAL ARRANGEMENT - TRIPLE WASTE MANAGEMENT 13170				CHK: TS	DATE: 26/09/2019
PART NUMBER: TRIPLE WASTE MANAGEMENT 13170				APP: JF	DATE: 28/02/2020
PART CONFIGURATION: STD				DRAWING STATUS: APPROVED FOR ISSUE	
BSS JOB NUMBER: 13170	3rd ANGLE PROJECTION		DO NOT SCALE FROM DRAWING DIMENSIONS IN mm UNLESS STATED OTHERWISE	Doc.REV: C	

NOTES:
 APPROXIMATE WEIGHT - 379.9kg